



DIN 11853/11864

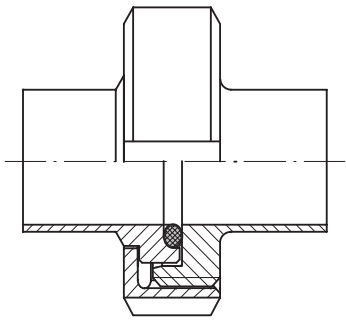
FOR PHARMACEUTICAL INDUSTRY

Pour industrie pharmaceutique

Per industria farmaceutica

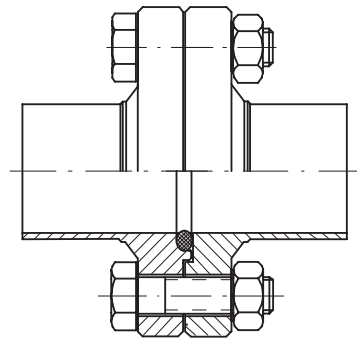
SCREWED PIPE CONNECTION

Raccord fileté
Raccordo filettato



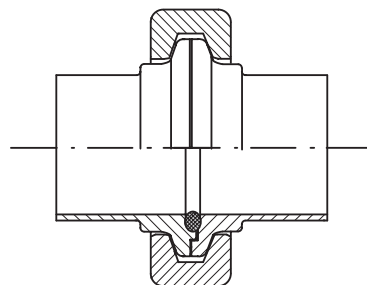
FLANGE PIPE CONNECTION

Raccord avec bride
Raccordo flangiato



CLAMP PIPE CONNECTION

Raccord avec ferrule clamp
Raccordo clampato





DIN

DN mm	F mm	D mm
10	13	10
15	19	16
20	23	20
25	29	26
32	35	32
40	41	38
50	53	50
65	70	66
80	85	81
100	104	100

ASME

DN mm	F mm	D mm
1/2"	12,7	9,4
3/4"	19,05	15,75
1"	25,4	22,1
1"1/2	38,1	34,8
2"	50,8	47,5
2"1/2	63,5	60,2
3"	76,2	72,9
4"	101,6	97,4

ISO

DN mm	F mm	D mm
13,5	13,5	10,3
17,2	17,2	14
21,3	21,3	18,1
26,9	26,9	23,7
33,7	33,7	29,7
42,4	42,4	38,4
48,3	48,3	44,3
60,3	60,3	56,3
76,1	76,1	72,1
88,9	88,9	84,3
114,3	114,3	109,7

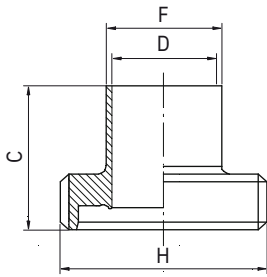
FOR TUBES ACC. TO DIN 11866 (SERIES A)

Pour tubes DIN 11866 (serie A) • PER TUBI DIN 11866 (SERIE A)

MALE DIN 11864-1/DIN 11853-1

DIN 11864-1/DIN 11853-1 male • BOCCHETTONE DIN 11864-1/DIN 11853-1 FEMMINA

4.740.DF. --

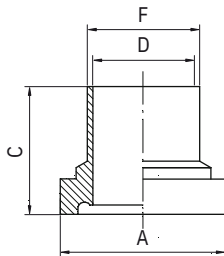


	DN	H	C	C	F	D	
	mm	mm	mm	mm	mm	mm	kg
4.740.DF.02-B	10	28	41	19	13	10	
4.740.DF.06-B	15	34	41	19	19	16	
4.740.DF.09-B	20	44	43	21	23	20	
4.740.DF.12-B	25	52	43	26	29	26	
4.740.DF.23-B	32	58	48	30	35	32	
4.740.DF.32-B	40	65	48	31	41	38	
4.740.DF.45-B	50	78	48	31	53	50	
4.740.DF.66-B	65	95	60	36	70	66	
4.740.DF.72-B	80	110	64	42	85	81	
4.740.DF.77-B	100	130	64	50	104	100	
			DIN 11864	DIN 11853			

LINER DIN 11864-1/DIN 11853-1

DIN 11864-1/DIN 11853-1 Douille • BOCCHETTONE DIN 11864-1/DIN 11853-1 MASCHIO

4.770.EF. --

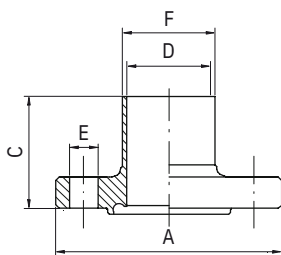


	DN	A	C	C	F	D	
	mm	mm	mm	mm	mm	mm	kg
4.770.EF.02-B	10	21,9	39	17	13	10	
4.770.EF.06-B	15	27,9	39	17	19	16	
4.770.EF.09-B	20	35,9	38	18	23	20	
4.770.EF.12-B	25	42,9	40	22	29	26	
4.770.EF.23-B	32	48,9	47	25	35	32	
4.770.EF.32-B	40	54,9	47	26	41	38	
4.770.EF.45-B	50	66,9	48	30	53	50	
4.770.EF.66-B	65	84,9	61	34	70	66	
4.770.EF.72-B	80	98,9	61	38	85	81	
4.770.EF.77-B	100	118,9	66	46	104	100	
			DIN 11864	DIN 11853			

NUT-FLANGE (WITH GROOVE) DIN 11864-2/DIN 11853-2

Bride DIN 11864-2/DIN 11853-2 avec joint • FLANGIA MASCHIO DIN 11864-2/DIN 11853-2 CON SEDE PER GUARNIZIONE

4.740.XF. --

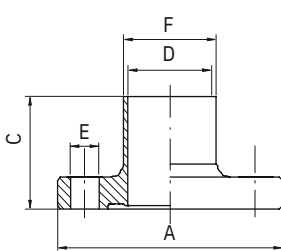


	DN	A	F	D	C	C	E	
	mm	mm	mm	mm	mm	mm	mm	kg
4.740.XF.02-B	10	54	13	10	41,5	25,5	4xM8x30	
4.740.XF.06-B	15	59	19	16	41,5	25,5	4xM8x30	
4.740.XF.09-B	20	64	23	20	41,5	25,5	4xM8x30	
4.740.XF.12-B	25	70	29	26	41,5	25,5	4xM8x30	
4.740.XF.23-B	32	76	35	32	46,5	25,5	4xM8x30	
4.740.XF.32-B	40	82	41	38	46,5	25,5	4xM8x30	
4.740.XF.45-B	50	94	53	50	46,5	25,5	4xM8x30	
4.740.XF.66-B	65	113	70	66	55,5	27,5	4xM10x35	
4.740.XF.72-B	80	133	85	81	59,5	27,5	4xM10x35	
4.740.XF.77-B	100	159	104	100	59,5	27,5	4xM10x40	

LINER-FLANGE (WITH NOTCH) DIN 11864-2/DIN 11853-2

Bride DIN 11864-2/DIN 11853-2 • FLANGIA FEMMINA DIN 11864-2/DIN 11853-2

4.770.XF. --



	DN	A	F	D	C	C	E	
	mm	mm	mm	mm	mm	mm	mm	kg
4.770.XF.02-B	10	54	13	10	40	24	4xM8x30	
4.770.XF.06-B	15	59	19	16	40	24	4xM8x30	
4.770.XF.09-B	20	64	23	20	40	24	4xM8x30	
4.770.XF.12-B	25	70	29	26	40	24	4xM8x30	
4.770.XF.23-B	32	76	35	32	45	24	4xM8x30	
4.770.XF.32-B	40	82	41	38	45	24	4xM8x30	
4.770.XF.45-B	50	94	53	50	45	24	4xM8x30	
4.770.XF.66-B	65	113	70	66	54	24	4xM8x30	
4.770.XF.72-B	80	133	85	81	58	26	4xM10x35	
4.770.XF.77-B	100	159	104	100	58	26	4xM10x40	
			DIN 11864	DIN 11853				

FOR TUBES ACC. TO DIN 11866 (SERIES A)

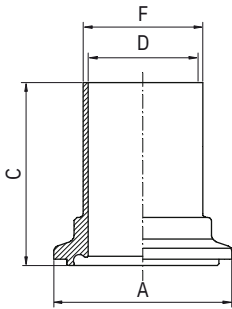
Pour tubes DIN 11866 (serie A) • PER TUBI DIN 11866 (SERIE A)

DIN 11853 / 11864

CLAMP FERRULE WITH GROOVE DIN 11864-3/DIN 11853-3

Ferrule DIN 11864-3/DIN 11853-3 avec joint • TRONCHETTO CLAMP DIN 11864-3/DIN 11853-3 CON SEDE PER GUARNIZIONE

4.740.LF. --

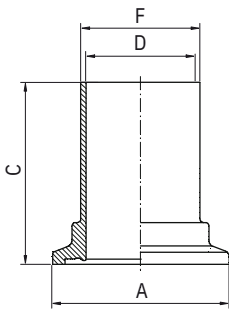


	DN	A	F	D	C	C	
	mm	mm	mm	mm	mm	mm	kg
4.740.LF.02-B	10	34	13	10	39,5	23,5	
4.740.LF.06-B	15	34	19	16	39,5	23,5	
4.740.LF.09-B	20	50,5	23	22	39,5	23,5	
4.740.LF.12-B	25	50,5	29	26	40	22	
4.740.LF.23-B	32	50,5	35	32	45,5	25,5	
4.740.LF.32-B	40	64	41	38	45,5	25,5	
4.740.LF.45-B	50	77,5	53	50	46	26	
4.740.LF.66-B	65	91	70	66	58	28	
4.740.LF.72-B	80	106	85	81	60	30	
4.740.LF.77-B	100	130	104	100	61,5	31,5	
					DIN 11864	DIN 11853	

CLAMP FERRULE WITH NOTCH DIN 11864-3/DIN 11853-3

Ferrule DIN 11864-3/DIN 11853-3 • TRONCHETTO CLAMP DIN 11864-3/DIN 11853-3

4.770.LF. --

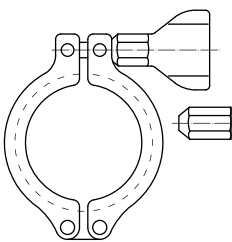


	DN	A	F	D	C	C	
	mm	mm	mm	mm	mm	mm	kg
4.770.LF.02-B	10	34	13	10	38	22	
4.770.LF.06-B	15	34	19	16	38	22	
4.770.LF.09-B	20	50,5	23	22	38	22	
4.770.LF.12-B	25	50,5	29	26	38,5	20,5	
4.770.LF.23-B	32	50,5	35	32	44	24	
4.770.LF.32-B	40	64	41	38	44	24	
4.770.LF.45-B	50	77,5	53	50	44,5	24,5	
4.770.LF.66-B	65	91	70	66	56,5	26,5	
4.770.LF.72-B	80	106	85	81	58,5	28,5	
4.770.LF.78-B	100	130	104	100	60	30	
					DIN 11864	DIN 11853	

HEAVY DUTY CLAMP DIN 11864-3/DIN 11853-3

DIN 11864-3/DIN 11853-3 Collier • MORSETTO CLAMP DIN 11864-3/DIN 11853-3

4.103.LL. --

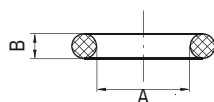


	DN	A	
	mm	mm	kg
4.103.LL.02-X	10-15	34	
4.103.LL.09-X	20-25-32	50,5	
4.103.LL.23-X	40	64	
4.103.LL.45-X	50	77,5	
4.103.LL.66-X	65	91	
4.103.LL.72-X	80	106	
4.103.LL.77-X	100	130	

O-RING DIN 11864/DIN 11853

O-RING DIN 11864-/DIN 11853 • O-RING DIN 11864/DIN 11853

4.790.D9. --



	DN	A	B	
	mm	mm	mm	kg
4.790.D9.02-I	10	12	3,5	
4.790.D9.06-I	15	18	3,5	
4.790.D9.09-I	20	22	3,5	
4.790.D9.12-I	25	28	3,5	
4.790.D9.23-I	32	34	5	
4.790.D9.32-I	40	40	5	
4.790.D9.45-I	50	52	5	
4.790.D9.66-I	65	68	5	
4.790.D9.72-I	80	83	5	
4.790.D9.77-I	100	102	5	

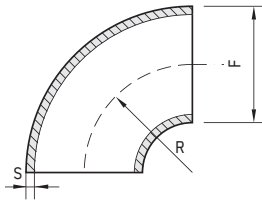
TUBES, BENDS, TEE, REDUCERS

Tubes, coudes, Té, réductions • Tubi, curve, tee, riduzioni

DIN 11852 SATIN 90° SHORT WELDING BEND

Coude 90° à souder satiné DIN 11852 • CURVA 90° A SALDARE SATINATA DIN 11852 (PER TUBI DIN 11850 SERIE 2)

5.241.FF. --

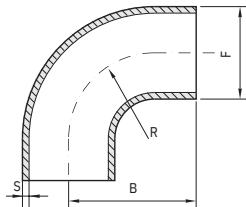


	DN mm	F mm	S mm	R mm	kg
5.241.FF.06-A	15	19	1,5	35	0,02
5.241.FF.09-A	20	23	1,5	40	0,05
5.241.FF.12-A	25	29	1,5	50	0,06
5.241.FF.23-A	32	35	1,5	55	0,10
5.241.FF.32-A	40	41	1,5	60	0,15
5.241.FF.45-A	50	53	1,5	70	0,19
5.241.FF.66-A	65	70	2	80	0,41
5.241.FF.72-A	80	85	2	90	0,53
5.241.FF.77-A	100	104	2	100	0,81
5.241.FF.81-A	125	129	2	188	
5.241.FF.86-A	150	154	2	225	
5.241.FF.90-A	200	204	2	300	

DIN 11865 SATIN 90° LONG WELDING BEND

Coude 90° à souder DIN 11865 • CURVA 90° ORBITALE A SALDARE SATINATA DIN 11865

5.291.GG. --

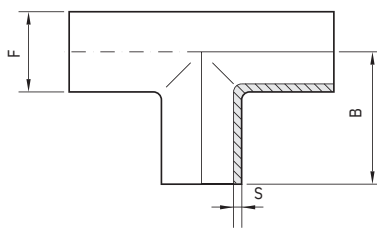


	DN mm	F mm	S mm	R mm	B mm	kg
5.291.GG.06-A	15	18	1,5	35	60	0,05
5.291.GG.09-A	20	22	1,5	40	65	0,06
5.291.GG.12-A	25	28	1,5	50	90	0,11
5.291.GG.23-A	32	34	1,5	55	95	0,16
5.291.GG.32-A	40	40	1,5	60	100	0,21
5.291.GG.45-A	50	52	1,5	70	110	0,30
5.291.GG.66-A	65	70	2	80	120	0,57
5.291.GG.72-A	80	85	2	90	145	0,78
5.291.GG.77-A	100	104	2	100	155	1,20
5.291.GG.81-A	125	129	2	188	270	2,10
5.291.GG.86-A	150	154	2	225	325	2,80

DIN 11865 SATIN TEE

Té à souder satine DIN 11865 • TEE A SALDARE SATINATO DIN 11865

5.491.GG. --

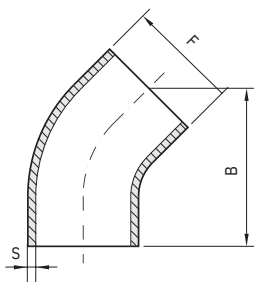


	DN mm	F mm	S mm	B mm	kg
5.491.GG.06-A	15	19	1,5	35	0,07
5.491.GG.09-A	20	23	1,5	40	0,10
5.491.GG.12-A	25	29	1,5	50	0,12
5.491.GG.23-A	32	35	1,5	55	0,18
5.491.GG.32-A	40	41	1,5	60	0,24
5.491.GG.45-A	50	53	1,5	80	0,30
5.491.GG.66-A	65	70	2	105	0,65
5.491.GG.72-A	80	85	2	130	1,10
5.491.GG.77-A	100	104	2	155	1,90
5.491.GG.81-A	125	129	2	188	
5.491.GG.86-A	150	154	2	225	
5.491.GG.90-A	200	204	2	300	

DIN 11865 SATIN 45° LONG WELDING BEND

Coude 45° à souder DIN 11865 • CURVA 45° A SALDARE ORBITALE SATINATA DIN 11865

5.391.GG. --



	DN mm	F mm	S mm	A mm	kg
5.391.GG.06-A	15	19	1,5	39,5	0,05
5.391.GG.09-A	20	23	1,5	41,6	0,06
5.391.GG.12-A	25	29	1,5	60,7	0,07
5.391.GG.23-A	32	35	1,5	62,8	0,08
5.391.GG.32-A	40	41	1,5	64,9	0,12
5.391.GG.45-A	50	53	1,5	69,0	0,19
5.391.GG.66-A	65	70	2	73,1	0,39
5.391.GG.72-A	80	85	2	92,3	0,47
5.391.GG.77-A	100	104	2	96,4	0,93
5.391.GG.81-A	125	129	2	160,2	1,12

TUBES, BENDS, TEE, REDUCERS

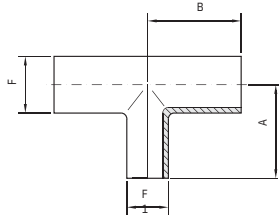
Tubes, coudes, Té, réductions • Tubi, curve, tee, riduzioni

DIN 11853 / 11864

DIN 11865 SATIN REDUCED EQUAL TEE

Té réduit à dudgeomner poli (pour tubes DIN 11850) • TEE RIDOTTO A SALDARE DIN 11865 SATINATO

5.514.GG --

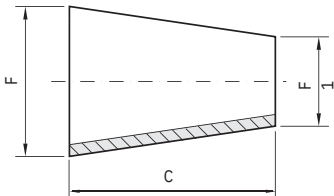


	DN mm	F mm	F1 mm	B mm	kg
5.514.GG.23-A	32	35	29	55	0,18
5.514.GG.32-A	40	41	35	60	0,24
5.514.GG.45-A	50	53	41	80	0,30
5.514.GG.66-A	65	70	53	105	0,65
5.514.GG.72-A	80	85	70	130	1,10
5.514.GG.77-A	100	104	85	155	1,901
5.515.GG.23-A	32	34	23	55	0,11
5.515.GG.32-A	40	40	29	60	0,24
5.515.GG.45-A	50	52	35	80	0,30
5.515.GG.66-A	65	70	41	105	0,65
5.515.GG.72-A	80	85	53	130	1,10
5.515.GG.77-A	100	104	70	155	1,90

DIN 11852 SATIN SHORT WELDING REDUCER

Reduction concentrique à souder-satiné DIN 11852 • RIDUZIONE CONCENTRICA A SALDARE SATINATA DIN 11852

5.640.FF. --

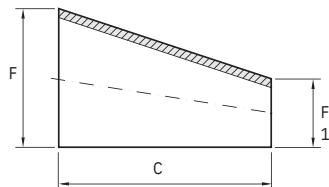


	DN mm	DN1 mm	C mm	F mm	F1 mm	kg
5.651.FF.09-A	20	15	7	23	19	0,03
5.651.FF.12-A	25	20	11	29	23	0,04
5.651.FF.23-A	32	25	11	36	29	0,05
5.651.FF.32-A	40	32	11	41	35	0,06
5.651.FF.45-A	50	40	22	53	41	0,11
5.651.FF.66-A	65	50	29	70	53	0,16
5.651.FF.72-A	80	65	27	85	70	0,24
5.651.FF.77-A	100	80	34	104	85	0,28
5.652.FF.12-A	25	15	18	29	19	0,03
5.652.FF.23-A	32	20	22	35	23	0,06
5.652.FF.32-A	40	25	22	41	29	0,06
5.652.FF.45-A	50	32	33	53	35	0,10
5.652.FF.66-A	65	40	51	70	41	0,12
5.652.FF.72-A	80	50	56	85	53	0,24
5.652.FF.77-A	100	65	61	104	70	0,28
5.653.FF.32-A	40	20	33	41	23	0,06
5.653.FF.45-A	50	25	44	53	28	0,10
5.653.FF.66-A	65	32	62	70	35	0,12
5.653.FF.72-A	80	40	78	85	41	0,26
5.653.FF.77-A	100	50	90	104	53	0,28

DIN 11852 SATIN WELDING ECCENTRIC REDUCER

Reduction excentrique à souder satiné DIN 11852 • RIDUZIONE ECCENTRICA A SALDARE SATINATA DIN 11852

5.750.FF. --



	DN mm	DN1 mm	C mm	F mm	F1 mm	kg
5.751.FF.12-A	25	20	11	29	23	0,04
5.751.FF.23-A	32	25	11	35	29	0,05
5.751.FF.32-A	40	32	11	41	35	0,06
5.751.FF.45-A	50	40	22	53	41	0,11
5.751.FF.66-A	65	50	29	70	53	0,16
5.751.FF.72-A	80	65	27	85	70	0,24
5.751.FF.77-A	100	80	34	104	85	0,28
5.752.FF.12-A	25	15	18	29	19	0,03
5.752.FF.23-A	32	20	22	35	23	0,06
5.752.FF.32-A	40	25	22	41	29	0,06
5.752.FF.45-A	50	32	33	53	35	0,10
5.752.FF.66-A	65	40	51	70	41	0,12
5.752.FF.72-A	80	50	56	85	53	0,24
5.752.FF.76-A	100	65	61	104	70	0,28